



STARTUP PROCEDURE

1. Check Bottles



- Fill the water bottle with deionized water
- Check that the waste bottle is empty
- TIP: Adding a drop of soap to the waste bottle helps to keep it clean*

2. Switch Instrument On

- Make sure the instrument is connected to your laptop via ethernet cable and ethernet-to-USB adapter
- The power switch is at the rear of the instrument

3. Copy Template

- Create a copy of the measurement template and rename it. This will be your workspace where the measurements are saved.

4. Start AmphaSoft

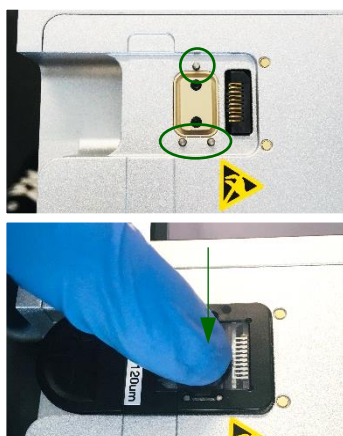


- Double click the AmphaSoft 2.0 icon on the desktop

5. Open Template

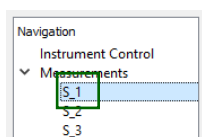
- In the AmphaSoft menu click on **Workspace > Load**. Navigate to the workspace, select the folder by clicking on it and click **Select Folder**.

6. Place Chip



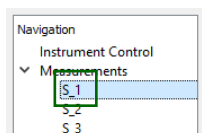
- Place the chip in the instrument using the 3 positioning pins (○) and gently push on the middle of the chip (▼) without touching the electrodes
- Carefully close the lid

7. Perform Initial Rinsing



- Click on **S_1** in the left **Navigation** panel and make sure the correct chip number is configured in the measurement tab. If not, select the correct chip from the **Chip Id** dropdown menu.
- Click on **Instrument Control** in the **Navigation** panel
- Select the **Basic** tab and click on **Start Rinsing**
The software will first connect to the instrument (green progress bar at the bottom) and then initiate the rinsing process
- After successful connection, a popup message appears. Make sure an empty container is placed below the sample holder and confirm by clicking **Continue Rinsing** twice
- TIP: If the water filter is dry or contains air bubbles, perform a few rinsing steps until the tubing is filled with deionized water*

8. Start Measuring



- Return to the measurement view by selecting the first measurement (**S_1**) in the **Navigation** panel on the left
- Enter the sample name and start with the sample preparation